

Utū - A Game of Attack

The iwi of Ngāti Kurī and Ngāi Tara are seeking utū on one another after experiencing conflict.

This is a two-player game. Each player has a dice and a counter representing their toa.

Both players place their toa counter at the beginning of their row and start rolling the dice. When the Ngāti Kurī player rolls an even number, they advance one place. When the Ngāi Tara player rolls an odd number, they advance one place.

You don't need to take turns rolling the dice – just roll your dice continuously and move your counter whenever you roll the right number for your iwi.

The winner is the iwi who makes it to their opponent's pā first!

Please cut these two circle counters out.

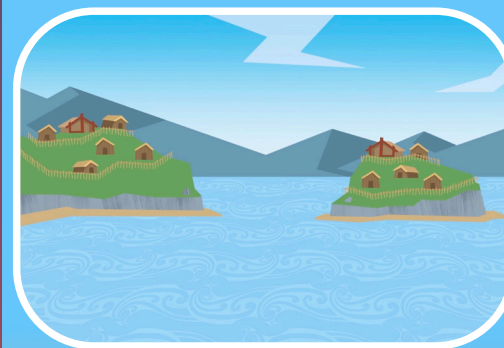
Place one at the start of the Ngāti Kurī row, and one at the start of the Ngāi Tara row.



Ngāti Kuri Start



Finish



Ngāi Tara Start

