

Te Huataki - Ngā Ture o Te Kēmu

Taputapu me ngā tāngata

- Ka tākaro takitahi, takirōpū rānei
- He tohu mā ia tīma hei whakaneke (whakamahia he toka, he porotiti aha rānei)
- Kaipānui kāri
- Whakaritea te papa kēmu me ngā kāri pātai e pā ana ki te pūrākau nei, ko Te Huataki.

Whāinga:

Ka toa te waka tuatahi kia tae atu ki uta

Tikanga:

1. Me takitahi, me takarōpū rānei te karawhiu
2. Te whāinga: Me whakawhiti tō waka i te moana kia tae ki uta (māu tō kāinga e whiriwhiri, ko Te Whanganui-a-Tara, ko Te Waipounamu rānei)
3. Mā te kaipānui kāri ngā tohutohu e pānui atu a waha ki ngā kapa takaro
4. Ko te kapa tuatahi ka whakautu tika i te pātai ka neke whakamua kia kotahi te nekehanga.
5. Ki te hē tō whakautu, ka hoki whakamuri kia kotahi te nekehanga
6. Kia mataara i te huringa o ngā hau! Ki te huri te hau, ko te kapa tuatahi ka whakautu tika i te pātai e whai ake nei, mā rātou tētahi atu kapa e pana atu kia hoki atu ki uta

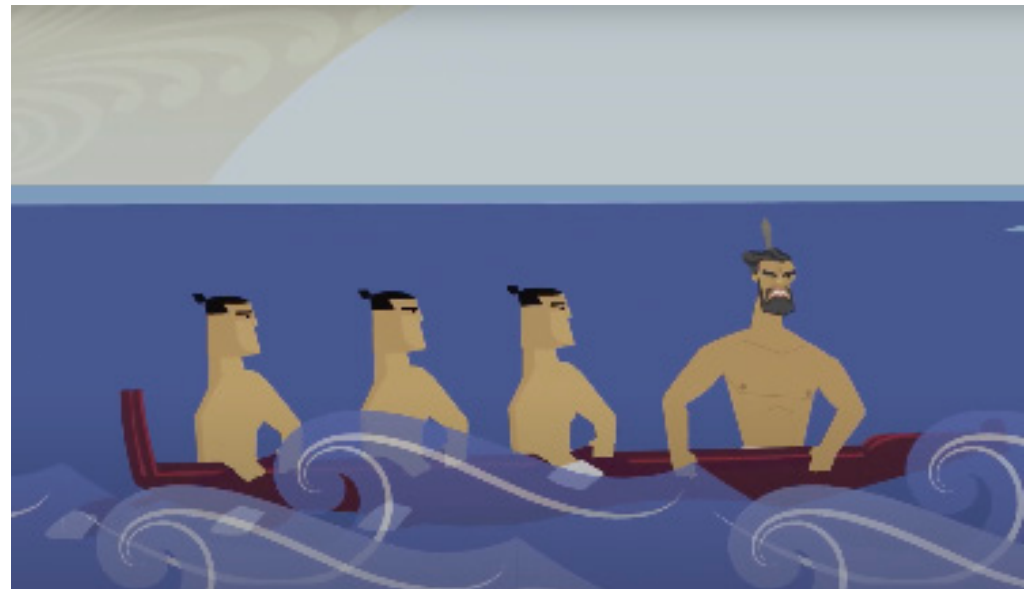
He panonitanga:

Me pēhea te whakarerekē i te kēmu nei? Kei a koe te tikanga.

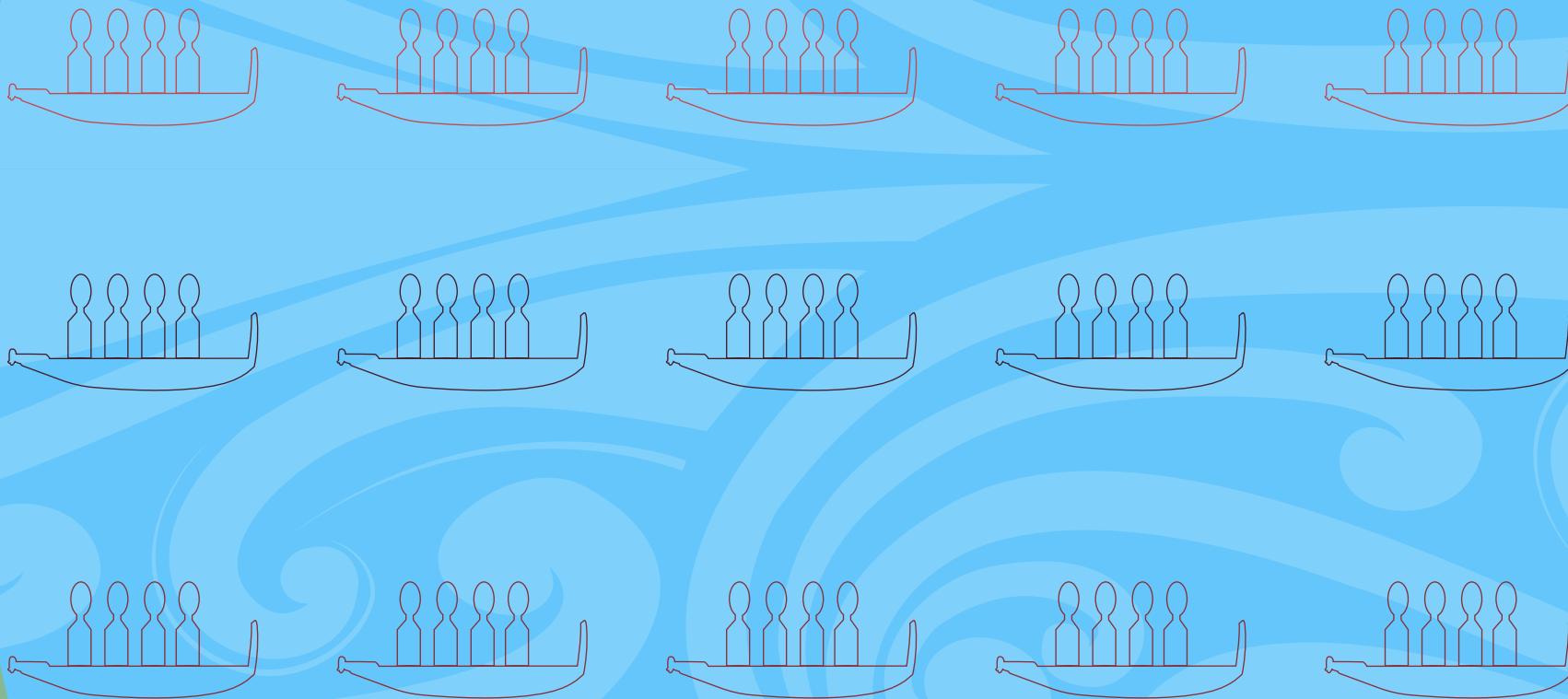
Horopaki:

I tētahi rangi i te hī ika a Te Huataki. I a ia e hī ika ana ka huri te hau me te ohore anō, ā, ka pūhia ia ki waho ki Te Moana o Raukawakawa. E kore a muri i hokia nā reira ia i tohu atu ai ki tana tira kia haere tonu tae atu ki Te Waipounamu. Ka haere te wā, i te hī ika anō ia, ā, ka pā mai te wairuatoa. Ka huri te hau ka whakawhiti anō i te moana Raukawakawa ka hoki ki Te Whanganui-a-Tara.

Tuatahi, mātakina te kiriata mō Te Huataki, tuarua, tākarohia tēnei kēmu.



Te Waipounamu



Te Whanganui-a-Tara

Te Moana o Raukawa

Nā wai i kī tēnei whakatauākī?
“Nā he ara mōu. Ko tōku tuarā.”

Nā Te Huataki

I whakamōhio atu a Tūraumoā ki a
wai kua waihape mai a Te Huataki?

Te Rākaitauheke

Ko Rākaitekura rāua ko wai ngā
wāhine a Te Huataki?

Māhakinui

Whakaotia tēnei whakataukī:
“E kore a muri e _____”

hokia

Whakaotia tēnei whakataukī:
“Mate kāinga tahi,
_____ kāinga rua.”

ora

Nā te aha a Te Huataki i tae atu ai ki
waho ki te moana Raukawakawa?

Nā te hau (huarere)

Ko Tūraumoā te wahine a Tiotio. Kei te
tika, kei te hē rānei?

Kei te tika

Ko Tiotio te matua kēkē o Te Huataki.
Kei te tika, kei te hē rānei?

Kei te hē

He aha te kai i roto i te pōhā?

He kākā

Ka whatua te pākē ki te aha?

tikumu

Ko Tahupare rāua ko wai ngā wāhine
a Te Rākaitauheke?

Rokopare

I noho a Te Huataki i hea?
Tautohua tētahi wāhi.

**Whātaimai, Te Waipounamu,
Kahurangi, Te Whanganui-a-Tara**

Ko Te Huataki te mokopuna a
Tūhaitara. Kei te tika, kei te hē rānei?

Kei te tika

Kua aha a Te Huataki i raro i te
manaakitanga a Tiotio? Kōwhiria te
whakautu tika.

harikoa, haumaru, hūmārie

He aha te kupu taurite mō weruweru?

kākahu

Ko hea te maunga ki tua o
Raukawakawa?

Ko Tapuwae o Uenuku

I hoatuhia whenua me te aha e
Rangitāne ki a Te Huataki?

He wahine

I kōrero a Te Huataki mō te ngāwari
o te mahi kererū. Ka taka noa i ngā
rākau i te aha o ngā manu rā?

momona

Nā te moe tahi a Te Huataki ki ngā tamāhine a Tiotio ka whai aha ia ki Te Waipounamu?

mana

I whakawhiti atu a Te Huataki i tēhea moana?

Raukawakawa

Ko hea te wāhi taurikura i kōrerohia e Te Huataki?

Te Waipounamu (Kahurangi)

I te aha a Te Huataki i te wā i huri te hau, ka pūhia rātou ki waho ki te moana Raukawakawa.

hī ika

Māharahara ana a Te Huataki i te aha a tōna iwi mōna i pūrere atu?

rii

Kei hea te wāhi Whātaimai?

Kei Te Whanganui-a-Tara

Ka tika atu a Tūraumoā ki te aha engari ka haukotitia e Tiotio?

karanga

He aha te kupu taurite mō pōua?

koroua, koro

He aha te kupu taurite mō hoki (atu)?

waihape

I aha ngā rangatira
i te whare o Tiotio?

hui

Ko Tapuwae o Uenuku te maunga e
muia e ēhea manu?

tītī, weka

I te tohe a Ngāti Kurī ki o rātou
whanaunga o Ngāti Kahungunu.
He tino wānanga i te haere mō te
whai aha hou.

kāinga

He taonga ngā rau tikumu hei aha
weruweru, hei aha pākē?

whatu

Tautohua kia toru ngā momo kai i
kōrerohia e Te Huataki

**kākā, tūī, rakiraki, tuna, inanga, ika,
kererū, tītī, weka**

Nō hea a Te Huataki?

Nō Ngāi Tahu

He tohunga a Tiotio.
Kei te tika, kei te hē rānei?

kei te tika

He aha te kupu mō 'kāore i waimarie'?

wairuatoa

He aha te kupu mahi mō te haere ki
tētahi wāhi i tētahi atu wāhi?

whakawhiti

He aha te tikanga o te kupu
whaimomoka i tēnei pūrākau?

**Ka haere konihi kia kore ai tētahi
atu e kite, e rongō, e mōhio,
e aha ana koe.**

Hei aha te pākē?

Hei ārai i te ua

Ko wai te atua o te hau?

Tāwhirimātea

I whakamārama atu a Te Huataki ki a
Tiotio mā ko Te Waipounamu he wāhi
aha?

taurikura

**Kia mataara e hika mā! Kua huri te
hau.**

**Ko te kapa tuatahi ka whakautu tika
i te pātai e whai ake nei, mā rātou
tētahi atu kapa e pana atu kia hoki
atu ki uta**

**Kia mataara e hika mā! Kua huri te
hau.**

**Ko te kapa tuatahi ka whakautu tika
i te pātai e whai ake nei, mā rātou
tētahi atu kapa e pana atu kia hoki
atu ki uta**

**Kia mataara e hika mā! Kua huri te
hau.**

**Ko te kapa tuatahi ka whakautu tika
i te pātai e whai ake nei, mā rātou
tētahi atu kapa e pana atu kia hoki
atu ki uta .**

Whakaotia tēnei whakatauaākī:
“Nā he ara mōu. Ko tōku _____.”

tuarā

He aha te tirohanga ngākau rorotu?
He tirohanga wairua pai, he tirohanga
kāore i te pai rānei?

He tirohanga wairua pai